

## **Huawei B970 Firmware upgrade 256.11.10.06.105.SP04**

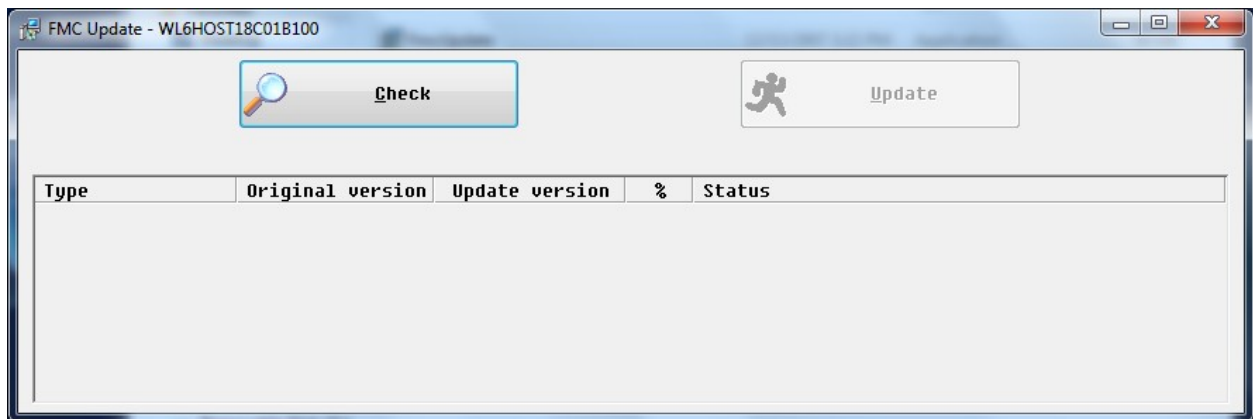
### **1. Start interface**

Make sure that the web interface is closed, no setup should be done during the upgrade for a successful update.

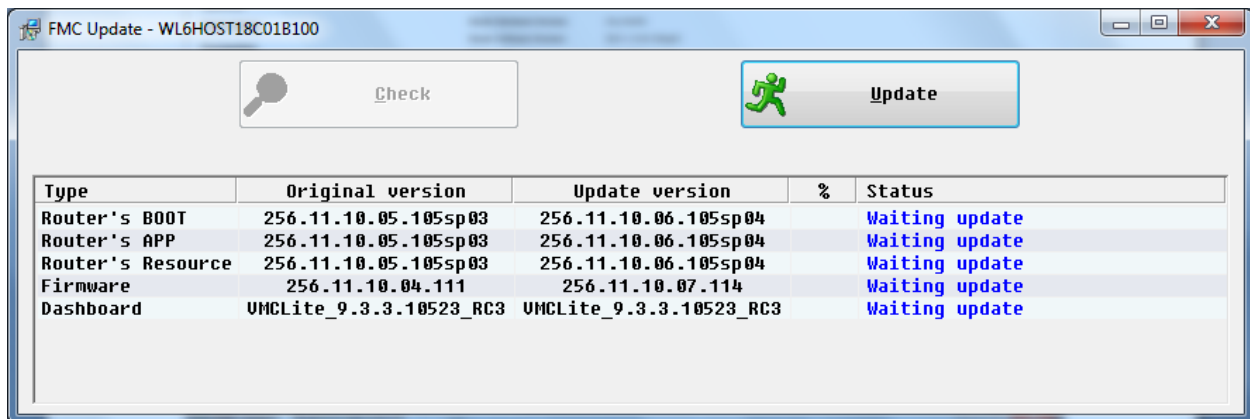
In the Firmware folder, start the interface by running the **FmcUpdate.exe** file.



An interface is displayed. Click on the **Check** button to look up for device update.



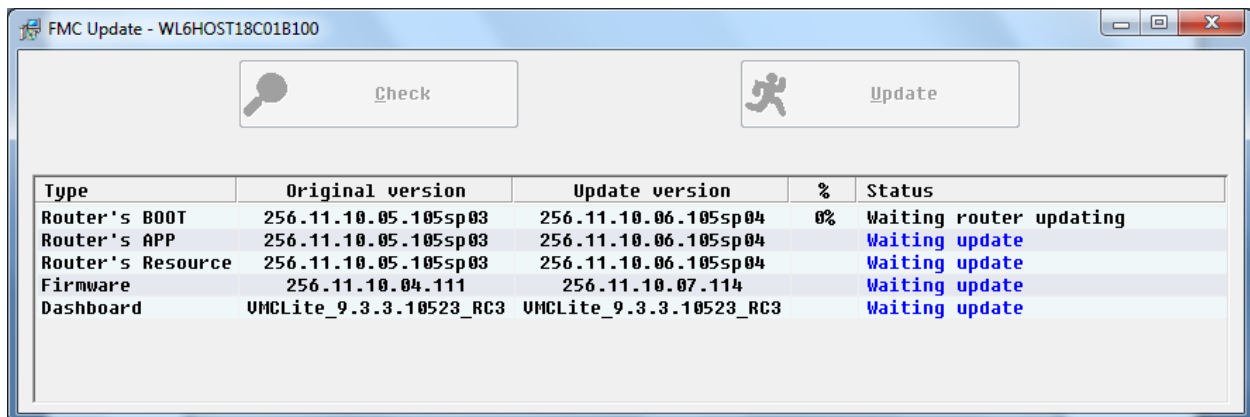
Allow a moment for the application to list the Original version of the device and the Update version.



## 2. Start the update process



Click on the Update link to start the update process. Different parts of the router will be upgraded sequentially as listed.

- **Router's BOOT** should update successfully.



- **Router's APP** should update successfully.



FMC Update - WL6HOST18C01B100

 Check  Update

Type	Original version	Update version	%	Status
Router's BOOT	256.11.10.05.105sp03	256.11.10.06.105sp04	100%	Download success(00:09)
Router's APP	256.11.10.05.105sp03	256.11.10.06.105sp04	8%	Sending router module's upda...
Router's Resource	256.11.10.05.105sp03	256.11.10.06.105sp04		Waiting update
Firmware	256.11.10.04.111	256.11.10.07.114		Waiting update
Dashboard	UMCLite_9.3.3.10523_RC3	UMCLite_9.3.3.10523_RC3		Waiting update

- **Router's Resource** should update successfully.



FMC Update - WL6HOST18C01B100

 Check  Update

Type	Original version	Update version	%	Status
Router's BOOT	256.11.10.05.105sp03	256.11.10.06.105sp04	100%	Download success(00:09)
Router's APP	256.11.10.05.105sp03	256.11.10.06.105sp04	100%	Download success(01:37)
Router's Resource	256.11.10.05.105sp03	256.11.10.06.105sp04	39%	Sending router module's upda...
Firmware	256.11.10.04.111	256.11.10.07.114		Waiting update
Dashboard	UMCLite_9.3.3.10523_RC3	UMCLite_9.3.3.10523_RC3		Waiting update

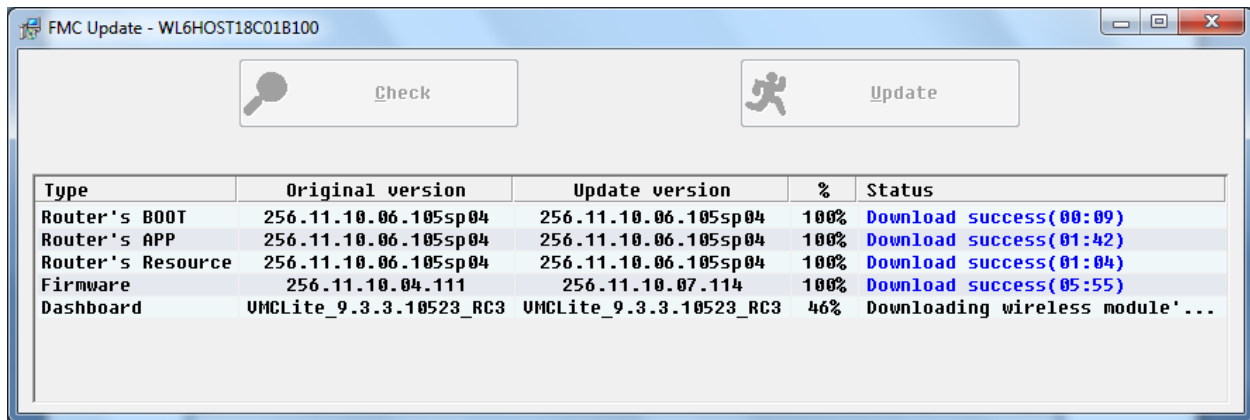
- **Firmware** should update successfully.

FMC Update - WL6HOST18C01B100

 Check  Update

Type	Original version	Update version	%	Status
Router's BOOT	256.11.10.06.105sp04	256.11.10.06.105sp04	100%	Download success(00:09)
Router's APP	256.11.10.06.105sp04	256.11.10.06.105sp04	100%	Download success(01:42)
Router's Resource	256.11.10.06.105sp04	256.11.10.06.105sp04	100%	Download success(01:04)
Firmware	256.11.10.04.111	256.11.10.07.114	11%	Downloading wireless module'...
Dashboard	UMCLite_9.3.3.10523_RC3	UMCLite_9.3.3.10523_RC3		Waiting update

- **Dashboard** should update successfully.



When all parts are 100% updated, just close the interface and your device will restart automatically.

### 3. Successful update.

All the parts should update successfully. You may now start the web interface and check that the new firmware version is updated:

