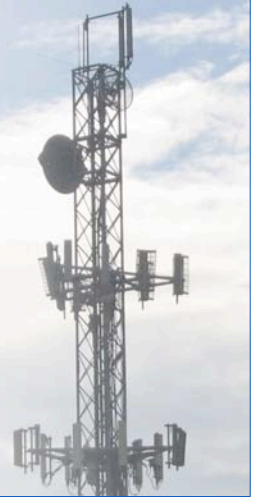




# XTREMERange5

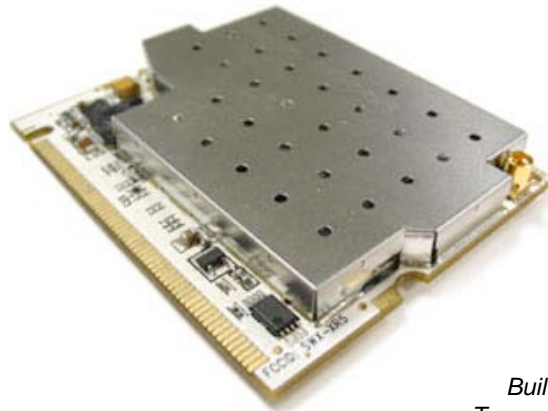
Carrier-Class 5GHz 802.11a Radio Module



The XtremeRange series of radio modules by Ubiquiti leverages the knowledge and experiences gained from customer interaction, field performance evaluations, and lab research -- and improves upon the original and highly successful SuperRange series of high-performance 802.11 radio cards. The XtremeRange5 represents the first true carrier-class 802.11a based 5GHz radio module specifically designed for mesh, bridging, and infrastructure applications requiring the highest levels of performance and reliability without compromise.

## Designed to Link Farther and Faster

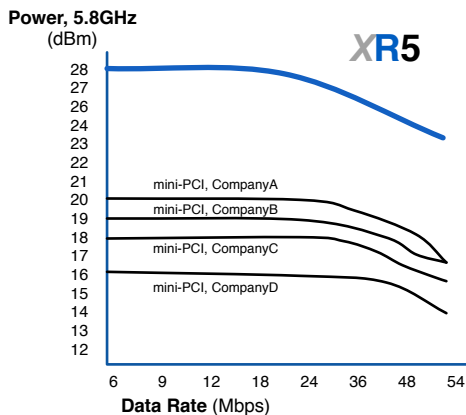
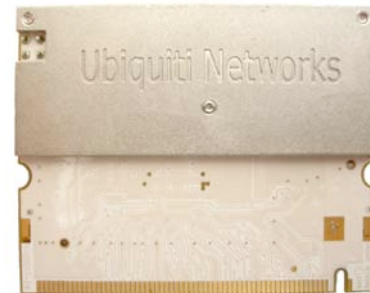
FEATURES
600mW Output Power
Industry-Best Sensitivity
Extended Temperature
Enhanced Filtering
5/10/20/40 MHz Channels
MMCX Ant. Connector



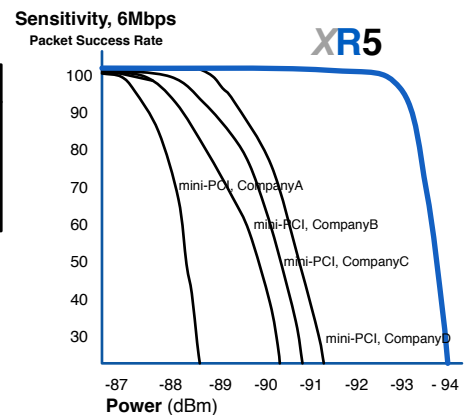
Hi-Performance PCB for Maximum RF Performance

Built-in HeatSink for Temperature Performance

Built for Industrial / Rugged Applications



Mikrotik is a trademark of Mikrotiks SIA, Latvia



# XTREMERange5

## TECHNICAL SPECIFICATIONS

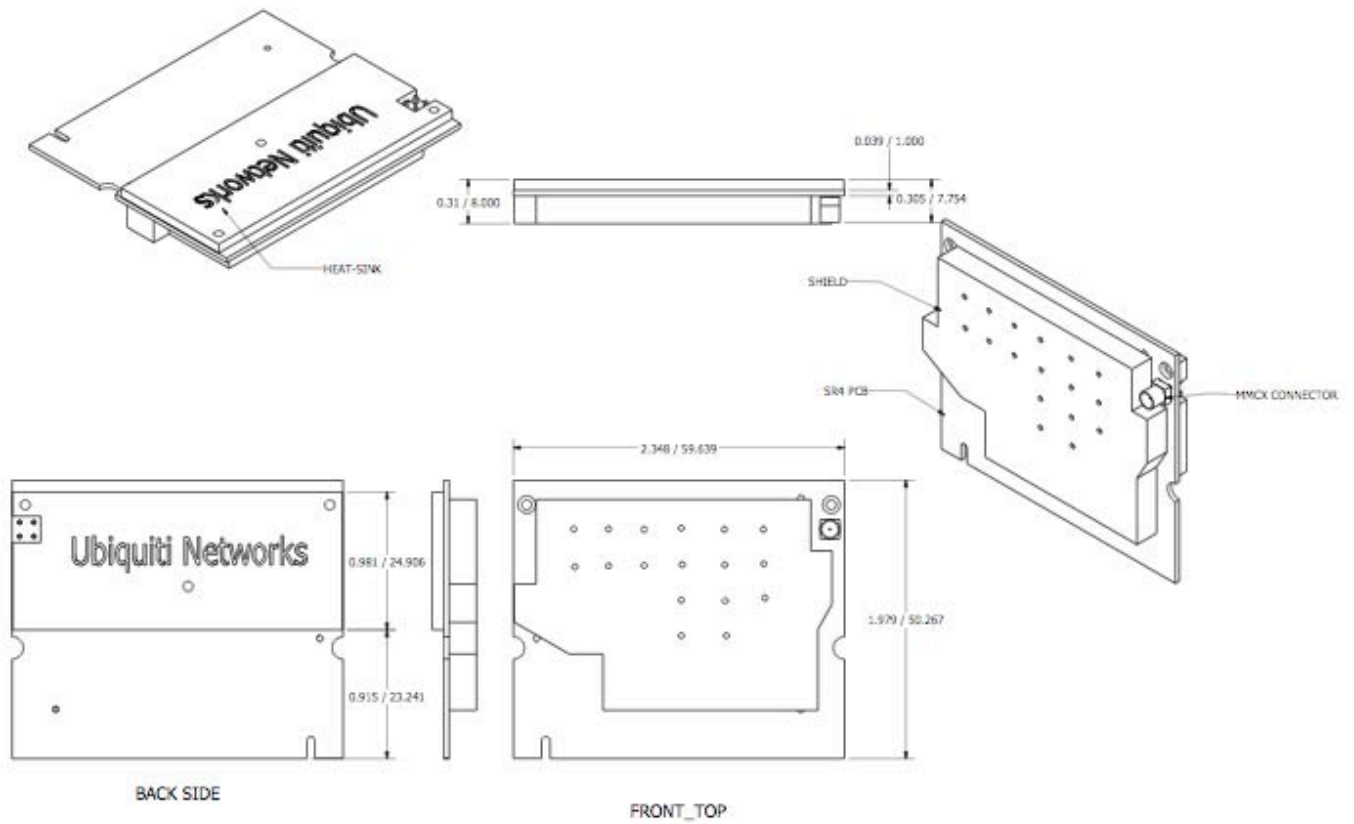
CARD INFORMATION							
Chipset	Atheros, 6th Generation, AR5414 with SuperA/Turbo Support						
Radio Operation	IEEE 802.11a, 5GHz						
Interface	32-bit mini-PCI Type IIIA						
Operation Voltage	3.3VDC						
Antenna Ports	Single MMCX						
Temperature Range	-40C to +80C (extended temp version up to +95C)						
Security	WPA, WPA2, AES-CCM & TKIP Encryption, 802.1x, 64/128/152bit WEP						
Data Rates	6Mbps, 9Mbps, 12Mbps, 24Mbps, 36Mbps, 48Mbps. 54Mbps						
TX Channel Width Support	5MHz / 10MHz / 20MHz / 40MHz						
RoHS Compliance	YES						
REGULATORY INFORMATION							
Wireless Modular Approvals	FCC Part 15.247 (23dBi Antenna), IC RS210, CE with Notified Body Number						
RADIO OPERATING FREQUENCY 5.20-5.825GHz							
TX SPECIFICATIONS				RX SPECIFICATIONS			
	DataRate	Avg.Power	Tolerance		DataRate	Sensitivity	Tolerance
802.11a OFDM	6Mbps	28 dBm	+/-1.5dB	802.11a OFDM	6Mbps	-94 dBm	+/-1.5dB
	9Mbps	28 dBm	+/-1.5dB		9Mbps	-93 dBm	+/-1.5dB
	12Mbps	28 dBm	+/-1.5dB		12Mbps	-91 dBm	+/-1.5dB
	18Mbps	28 dBm	+/-1.5dB		18Mbps	-90 dBm	+/-1.5dB
	24Mbps	28 dBm	+/-1.5dB		24Mbps	-86 dBm	+/-1.5dB
	36Mbps	26 dBm	+/-1.5dB		36Mbps	-83 dBm	+/-1.5dB
	48Mbps	24 dBm	+/-1.5dB		48Mbps	-77 dBm	+/-1.5dB
	54Mbps	23 dBm	+/-1.5dB		54Mbps	-74 dBm	+/-1.5dB
ADJUSTABLE CHANNEL SIZE SUPPORT (Increase Channel Capacity or Increase Throughput)							
5MHz		10MHz		20MHz		40MHz (Turbo)	
CURRENT CONSUMPTION INFORMATION							
TX CURRENT CONSUMPTION				RX CURRENT CONSUMPTION			
	DataRate	Current	Tolerance		DataRate	Current	Tolerance
802.11a OFDM	6Mbps	1.80 A	+/-100 mA	802.11a OFDM	6Mbps	300 mA	+/-100 mA
	9Mbps	1.80 A	+/-100 mA		9Mbps	300 mA	+/-100 mA
	12Mbps	1.80 A	+/-100 mA		12Mbps	300 mA	+/-100 mA
	18Mbps	1.80 A	+/-100 mA		18Mbps	300 mA	+/-100 mA
	24Mbps	1.80 A	+/-100 mA		24Mbps	300 mA	+/-100 mA
	36Mbps	1.50 A	+/-100 mA		36Mbps	300 mA	+/-100 mA
	48Mbps	1.30 A	+/-100 mA		48Mbps	300 mA	+/-100 mA
	54Mbps	1.10 A	+/-100 mA		54Mbps	300 mA	+/-100 mA
RANGE PERFORMANCE							
Indoor (Antenna Dependent):				Up to 150meters			
Outdoor (Antenna Dependent):				Over 50km			
DRIVER INFORMATION							
Operating System Support				Linux MADWIFI, WindowsXP, Windows2000			
Advanced Mobility / QuickHandoff				WindowsXP/2000 Utility with Enhanced Mobility Driver from Ubiquiti			
Cisco Support				CCX 4.0 Certified Driver/Utility also available from Ubiquiti			
For help with MADWIFI or other Special Driver Support, Please e-mail support@ubnt.com							



495-499 Montague Expwy.  
 Milpitas, CA 95035  
 T (408)-942-3085  
 F (408)-351-4973  
<http://www.ubnt.com>

# XTREMERange5

## MECHANICAL DIMENSIONS



495-499 Montague Expwy.  
Milpitas, CA 95035  
San Jose, CA 95112  
T (408)-942-3085  
F (408)-351-4973  
<http://www.ubnt.com>